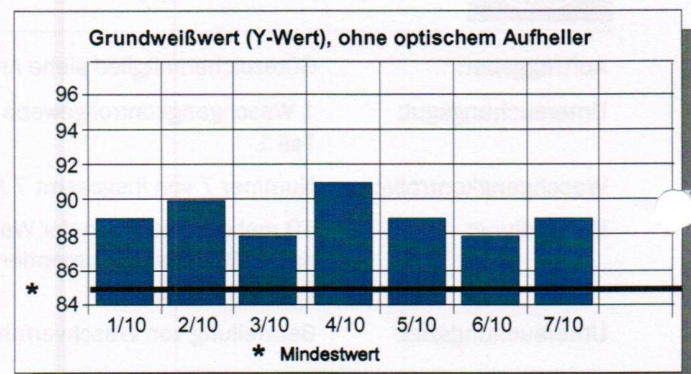
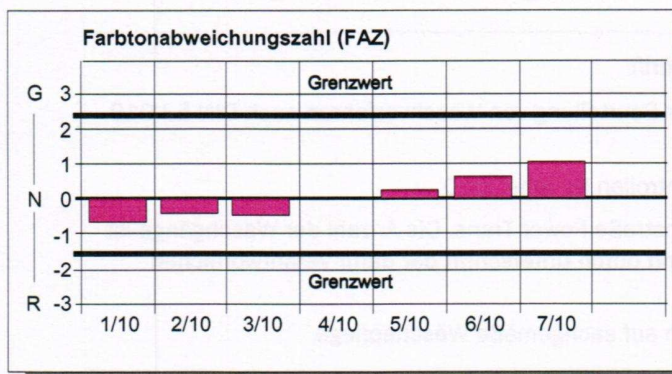
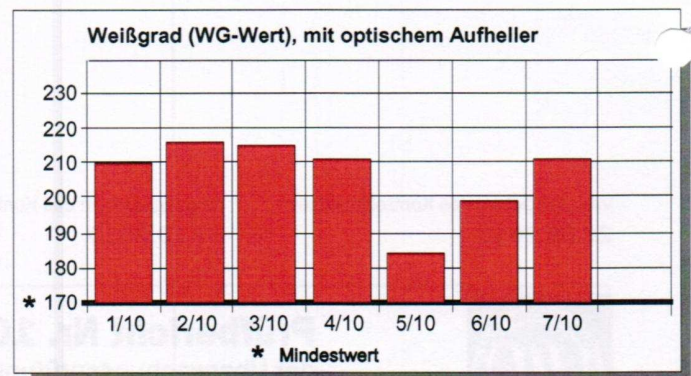
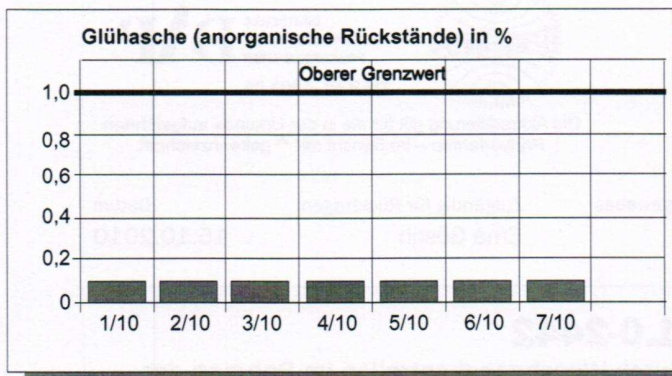
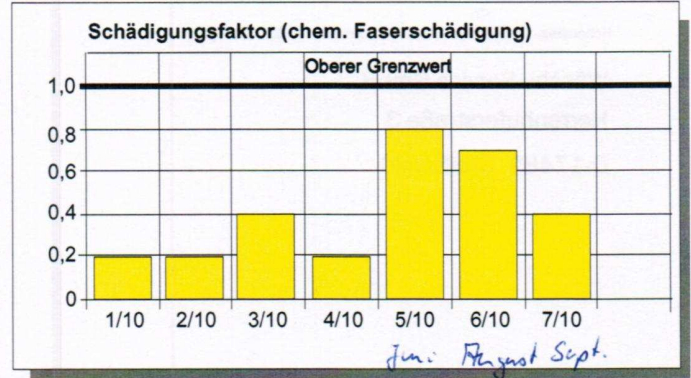
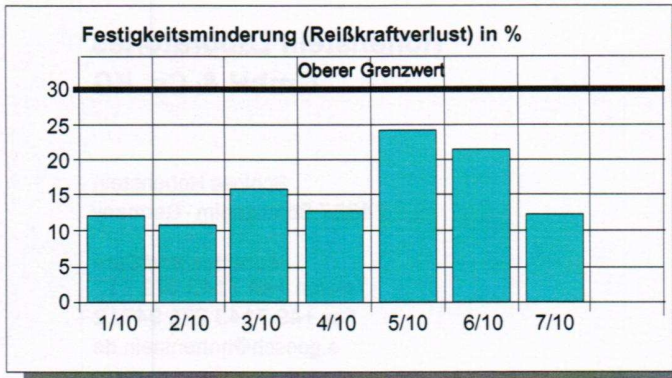


## HOHENSTEINER-PROGRESSIV-DIAGRAMM RAL-GZ 992/1



Der Bericht umfasst 2 Seiten und 1 Anmerkung.

Der Direktor der Abteilung  
Function and Care:

Dr. Andreas Schmidt



Die Sachbearbeiterin Wäscherei:

Erna Gösch